



Marian Park

PREMIUM LIVING, PERFECTLY PLACED

Kadri Park Road, Mangalore



Premium Studio, 1 BHK & 2 BHK Homes





Welcome to

Marian Park

Marian Park is a thoughtfully designed residential development located in the heart of Kadri, Mangalore. Offering well-planned ground floor units, the project provides a perfect balance of comfort, accessibility, and everyday convenience.

With a range of Studio, 1BHK, and 2BHK homes, Marian Park caters to homeowners seeking practical living spaces in a prime, well-connected neighborhood.

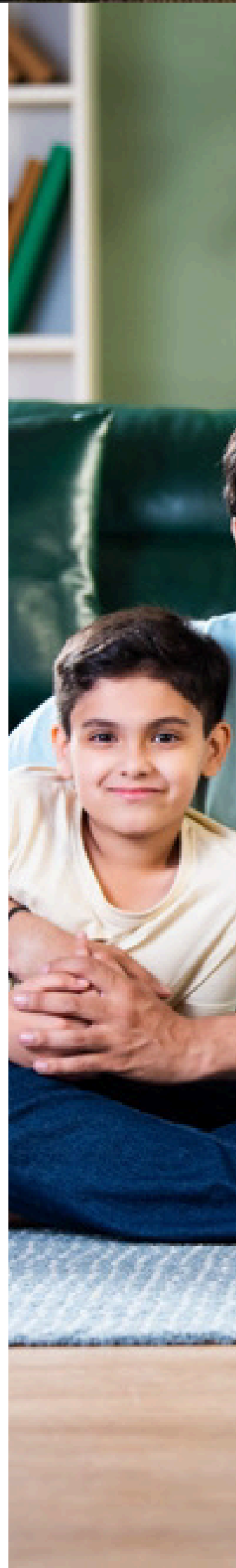
- Ground floor units available
- Studio, 1BHK & 2BHK configurations
- Unit sizes ranging from 500 sq.ft. to 1250 sq.ft.
- Located in Kadri, one of Mangalore's most prominent areas

About Marian

At Marian, we don't just build homes – we deliver dreams.

Founded in 2008 by professional Civil Engineers, Marian Projects Private Limited has grown into one of the most trusted real estate developers in Mangaluru, with a strong presence in Mangaluru and Udupi. Since becoming a Private Limited company in 2011, Marian has successfully delivered 1,500+ homes across 23 projects, earning the trust of countless families.

Known for quality, meticulous planning, and in-house construction excellence, Marian caters to all segments of society. Backed by an experienced team of professionals, we continue to grow with a clear vision to expand our presence globally, while staying rooted in integrity and innovation.





Prime Location

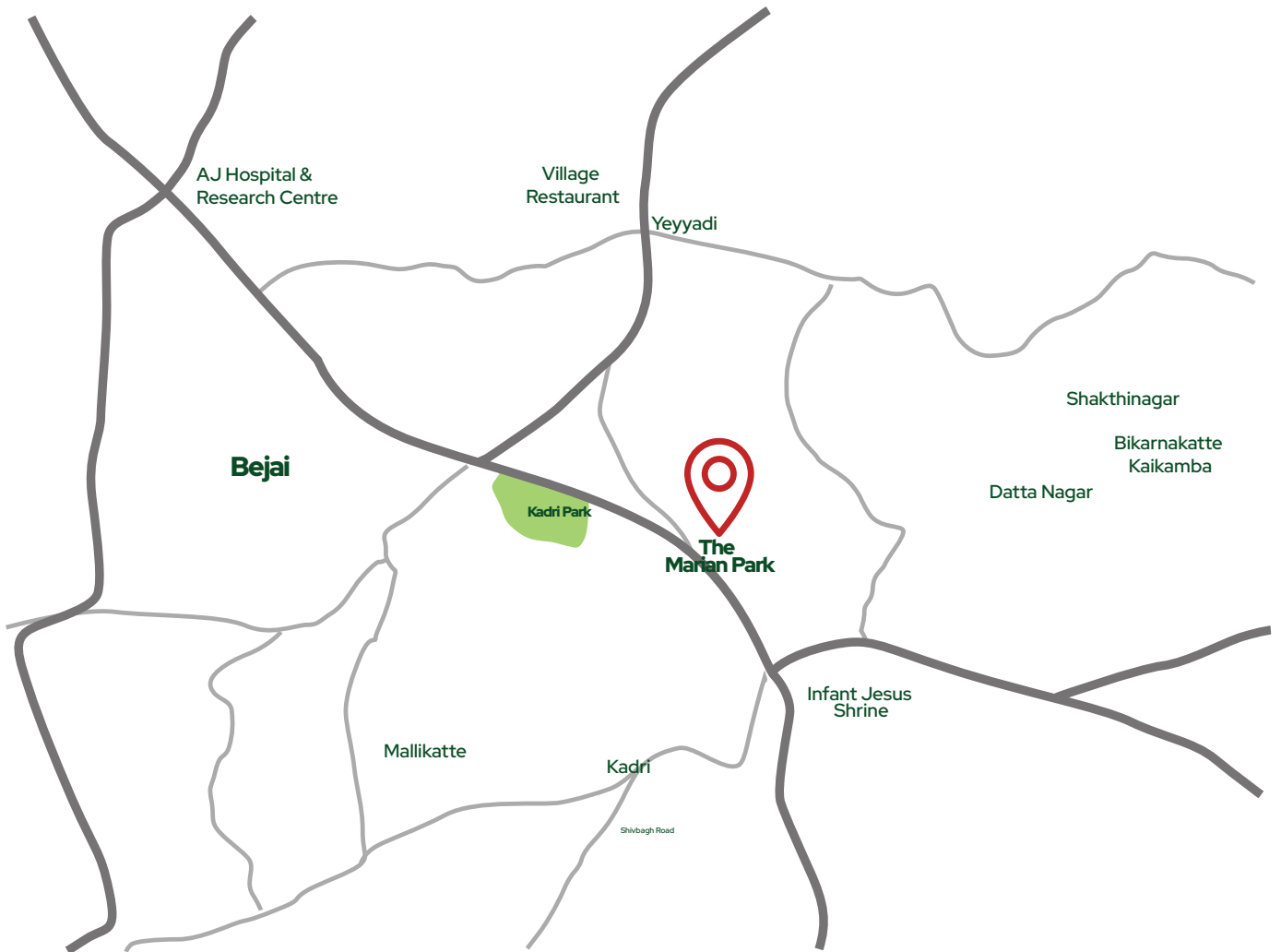
Everyday Convenience

Marian Park enjoys a prime location on Kadri Park Road, Mangaluru, offering seamless connectivity to the city's key destinations. The project is conveniently close to the KSRTC Bus Stand, Mangaluru City Corporation, and the TMA Pai Convention Centre, along with easy access to major landmarks, commercial hubs, and essential civic infrastructure—making everyday travel effortless and well connected.

• Kadri Park –	Walking distance
• Padua PU College –	100 m
• City Centre Mall –	4 km
• Bharath Mall –	2.5 km
• St. Aloysius (Deemed University) –	5 km
• St. Agnes PU College –	2.3 km
• Indiana Hospital & Heart Institute –	2.9 km
• Tejasvini Hospital, Kadri –	1.5 km
• Mangaluru International Airport –	11.4 km
• A J Hospital –	2.9km



Location Map



Site plan



PROJECT:	MARIAN PARK KADRI MANGALORE
DRAWING TITLE:	SITE PLAN



MARIAN PROJECTS PVT. LTD.

Ground Floor Plan



Thoughtfully Planned

Ground Floor Layout

The ground floor at Marian Park is carefully designed to ensure

- ① Easy accessibility
- ① Well-organized unit distribution
- ① Clear internal circulation
- ① Convenient access points

The site layout ensures a comfortable living experience while maintaining privacy and functional planning.

Homes Designed *for Practical Living*

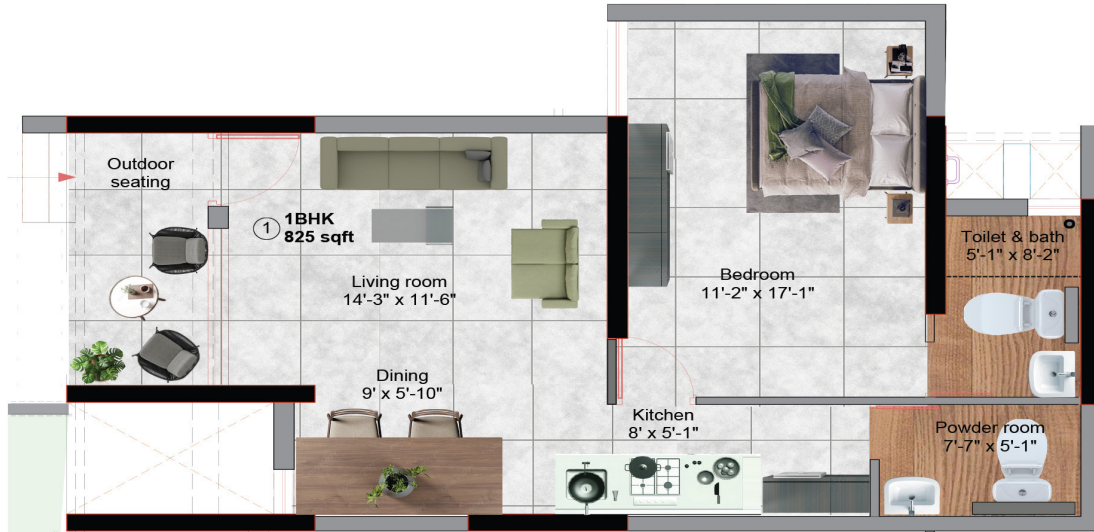
Marian Park offers multiple unit options on the ground floor to suit different lifestyle needs.

Available Configurations

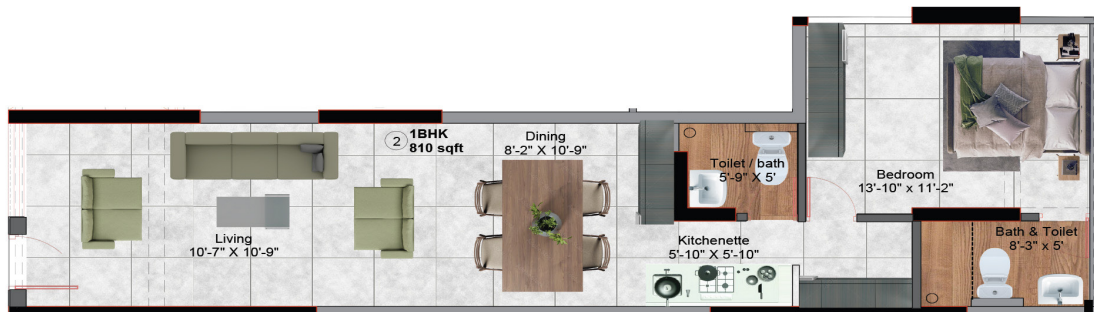
- ① **STUDIO APARTMENTS**
Sizes ranging from 500 sq.ft. to 625 sq.ft.
Ideal for individuals, working professionals, and investment purposes
- ① **1BHK APARTMENTS**
Sizes ranging from 725 sq.ft. to 1025 sq.ft.
Designed for comfortable everyday living
- ① **2BHK APARTMENT - 1250 sq.ft.**
Spacious layout suitable for families



Unit Plans

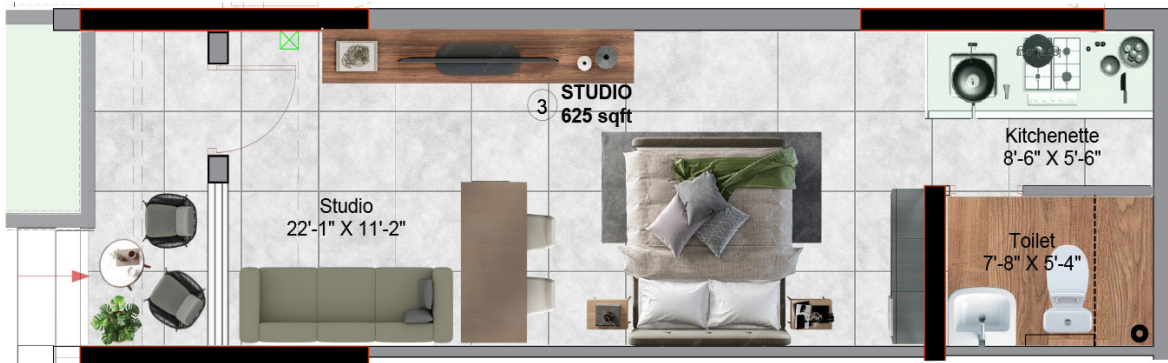


1 BHK
Saleable Area : 825 Sq.Ft



1 BHK
Saleable Area : 810 Sq.Ft

Unit Plans



STUDIO
Saleable Area : 625 Sq.Ft



STUDIO
Saleable Area : 625 Sq.Ft

Unit Plans



1 BHK
 Saleable Area : 810 Sq.Ft



STUDIO
 Saleable Area : 575 Sq.Ft

Unit Plans



STUDIO

Saleable Area : 625 Sq.Ft



1 BHK

Saleable Area : 1010 Sq.Ft

Unit Plans



STUDIO
Saleable Area : 575 Sq.Ft



STUDIO
Saleable Area : 525 Sq.Ft

Unit Plans



STUDIO
Saleable Area : 525 Sq.Ft



STUDIO
Saleable Area : 575 Sq.Ft

Unit Plans



STUDIO
Saleable Area : 625 Sq.Ft



1 BHK
Saleable Area : 910 Sq.Ft

Unit Plans



STUDIO
Saleable Area : 500 Sq.Ft



1 BHK
Saleable Area : 725 Sq.Ft

Unit Plans



1 BHK
Saleable Area : 875 Sq.Ft



1 BHK
Saleable Area : 810 Sq.Ft

Unit Plans



1 BHK
Saleable Area : 1025 Sq.Ft



1 BHK
Saleable Area : 910 Sq.Ft

Unit Plans

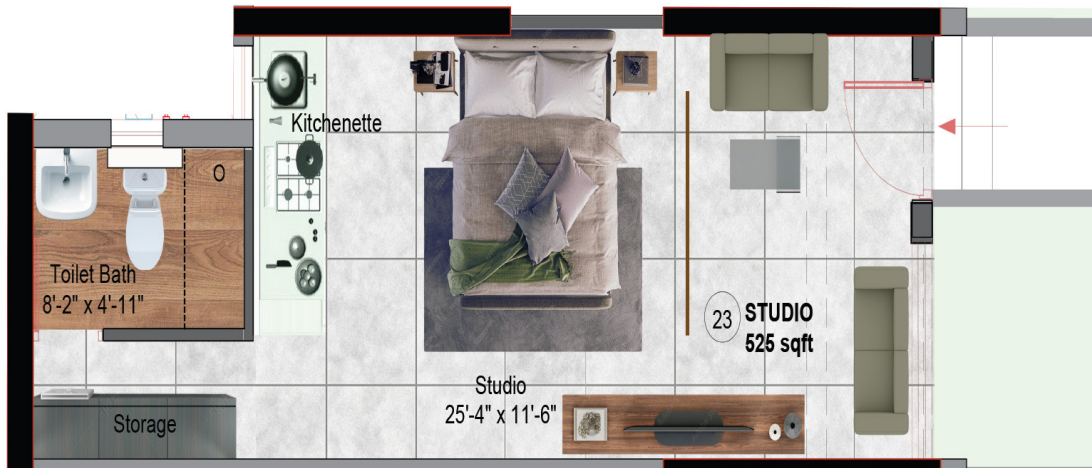


1 BHK
Saleable Area : 1010 Sq.Ft

STUDIO
Saleable Area : 575 Sq.Ft



Unit Plans



STUDIO
Saleable Area : 525 Sq.Ft



STUDIO
Saleable Area : 525 Sq.Ft

Unit Plans



STUDIO

Saleable Area : 575 Sq.Ft



1 BHK

Saleable Area : 1010 Sq.Ft

Unit Plans



STUDIO

Saleable Area : 625 Sq.Ft



STUDIO

Saleable Area : 575 Sq.Ft

Unit Plans



1 BHK
Saleable Area : 810 Sq.Ft



STUDIO
Saleable Area : 625 Sq.Ft

Unit Plans

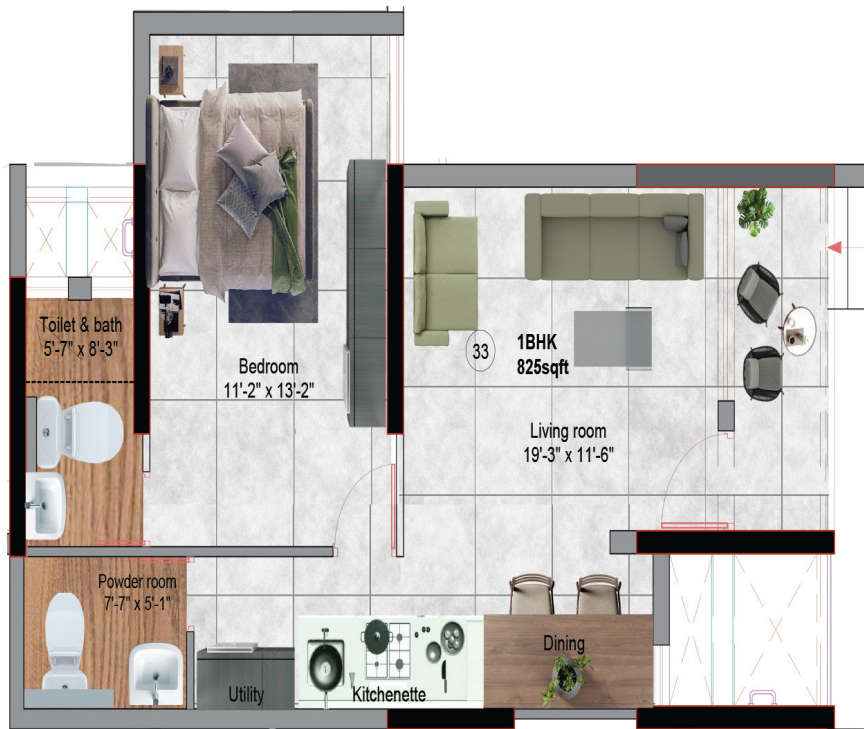


STUDIO
Saleable Area : 625 Sq.Ft



2 BHK
Saleable Area : 1250 Sq.Ft

Unit Plans



1 BHK
Saleable Area : 825 Sq.Ft

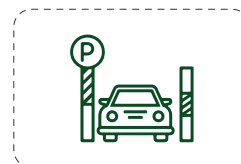
Safety & Convenience *Designed for Peace of Mind*



24/7 Security



Generator Backup



Reserved Parking



Well-maintained common spaces



Secure residential environment



Marian Park offers a range of amenities designed to support a comfortable and well-rounded lifestyle.

Amenities *That Enhance Everyday Life*



Clubhouse



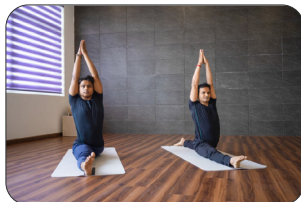
Children's Play Area



Gym & Fitness Centre



Indoor Badminton Court



Yoga / Zumba Space



Swimming Pool



Cycling / Walking Track



Community Kitchen



Party / Function Hall





Get in Touch

For availability, pricing, and site visit details, please contact:

☎ : +91 96866 87602

✉ : sales@marian.in

Office Address:

3rd Floor, Ram Bhavan Complex,
Kodialbail, Mangalore – 575003

Site Address:

Ground Floor, Marian Park,
Kadri Park Road,
Mangalore – 575004

Book a Site Visit Today
Discover comfortable ground floor living at Marian Park.



Marian Projects Pvt. Ltd